

Please provide the following information:  
 -Model number  
 -Serial number  
 -Part description and number as shown in parts list

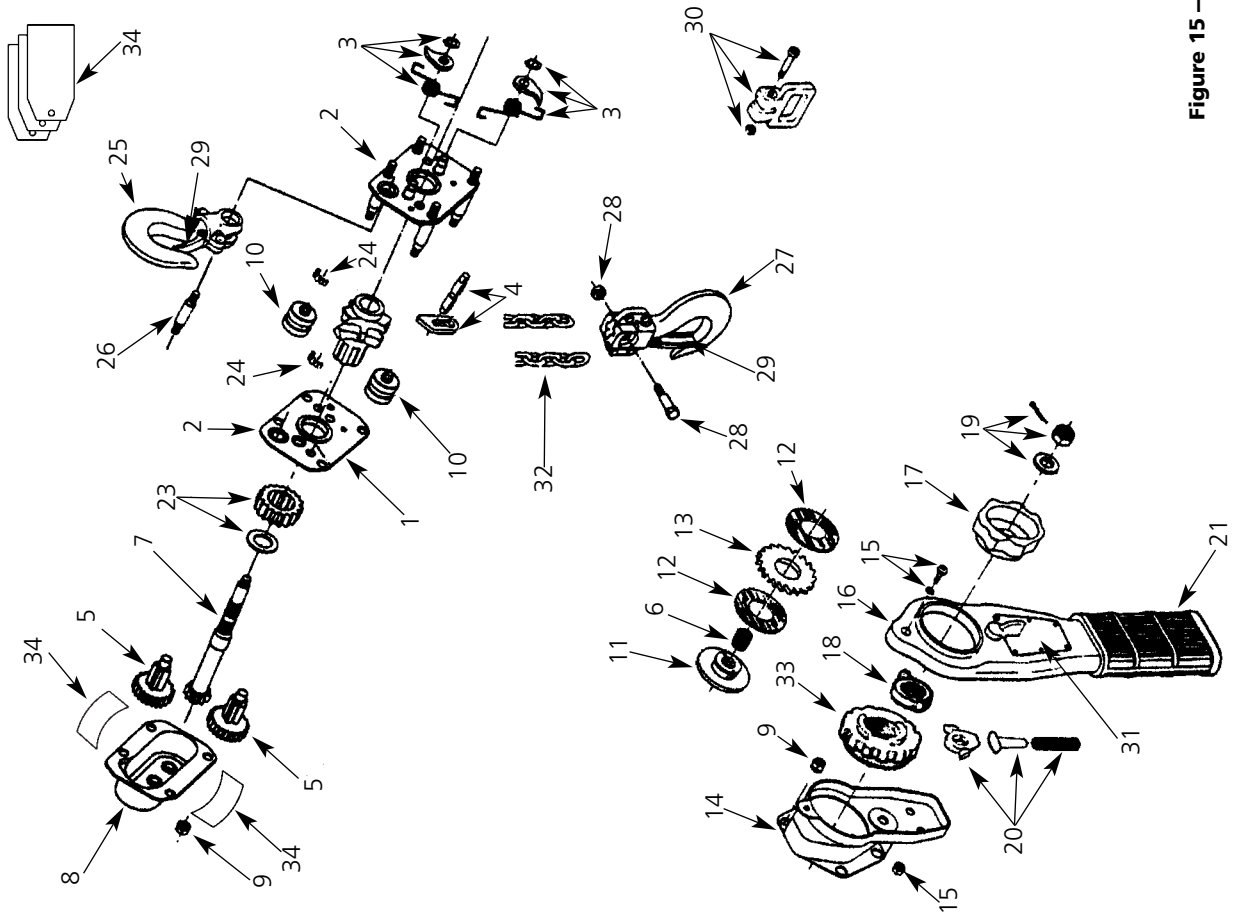


Figure 15 — Series 653 Hand Operated Lever Hoist

# Repair Parts List

Ref. Qty.		Description		Capacities:	
Ref. Qty.	No.	Description	3/4 TON	1½ TON	3 TON
1	1	Side plate assembly (gear side)-includes 2 bushings and bearing race	53750	53751	53752
2	1	Side plate assembly (brake side)-includes 2 pawl studs, bearing race and 4 studs	53753	53754	53755
3	2	Pawl, spring and retainer ring	53756	53757	53794
4	1	Stripper	53758	53759	53760
5	1	Gear set (2 gears)	53761	53762	53763
6	1	Spring	53764	53765	53765
7	1	Pinion	53766	53767	53768
8	1	Gear cover with bushings	53876	53881	53885
9	1	Gear and brake cover hardware kit-includes 8 nuts	53772	53773	53774
10	2	Chain guide roller	53775	53776	53777
11	1	Friction hub	53778	53779	53780
12	2	Friction disc	53781	53782	53844
13	1	Ratchet	53783	53784	53785
14	1	Brake cover assembly	53877	53882	53886
15	1	Lever hardware kit-includes 1 screw, 1 lockwasher and 2 locknuts	53789	53790	53845
16	1	Lever assembly-includes directional lever	53878	53883	53887
17	1	Free chaining knob	53879	53879	53879
18	1	Check washer	53796	53796	53796
19	1	Brake nut kit-includes nut, cotter pin and spacer	53797	53798	53846
20	1	Directional pawl kit-includes pawl, spring and shaft	53799	53800	53800
21	1	Lever grip	53801	53802	53802
22	1	Liftwheel	53838	53839	53840
23	1	Liftwheel gear kit-includes gear and snap ring	53805	53806	53807
24	1	Liftwheel roller kit-includes 68 rollers for 3/4 ton unit 74 rollers for 1½ ton unit 68 rollers for 3 ton unit	53803	53847	53804
25	1	Upper hook assembly-includes hook, latch and hook block	53808	53809	53810
26	1	Upper hook pin	53811	53812	53813
27	1	Lower hook assembly-includes hook, latch and hook block	53814	53815	53816
28	1	Chain bolt kit-includes bolt and nut	53817	53818	53819
29	2	Latch kit-includes latch spring and rivet	53820	53821	53822
30	1	Chain stop kit-includes chain stop, screw and nut	53880	53884	53888
31	1	Nameplate kit-includes nameplate and 6 drive screws	53870	53871	53872
32	1	Load chain	85959PH 635131PH 85960PH 6x18-T(8) 6x24-T(8) 10x30-T(8)		Specify Length Required
33	1	Lever ratchet	53835	53836	53837
34	1	Warning label and free chaining tag kit-includes 2 labels and 3 tags	53873	53874	53875