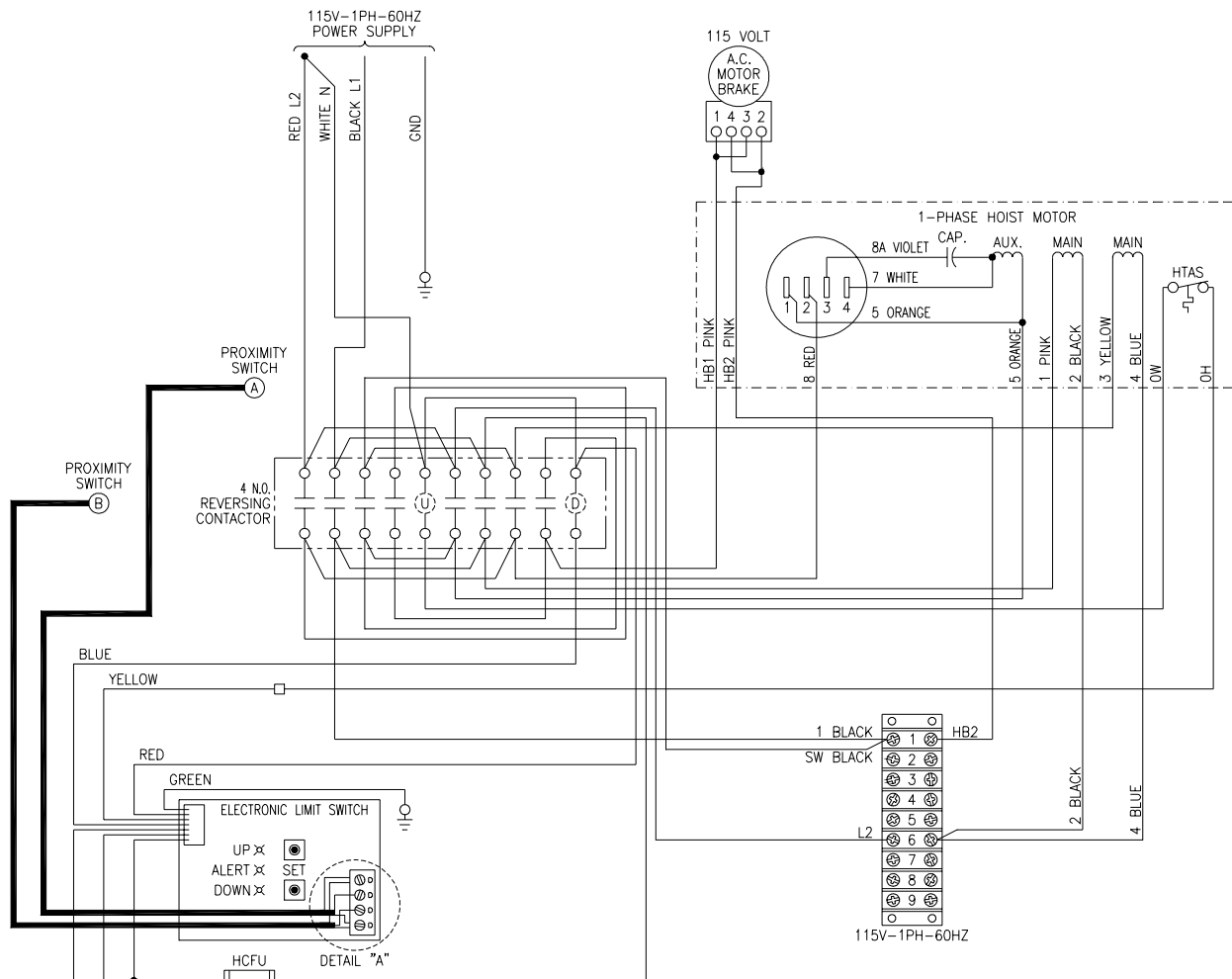


BUDGIT® Electric Hoist Wiring Diagrams

1 PHASE, 115/230 VOLT RECONNECTABLE, SINGLE SPEED HOIST



NOTE:
WHEN RECONNECTING THIS HOIST FOR 230 VOLT THE BRAKE, MOTOR & TRANSFORMER NEED TO BE REWIRED AS ILLUSTRATED ON DRAWING 333211 SHEET 2.

DANGER:

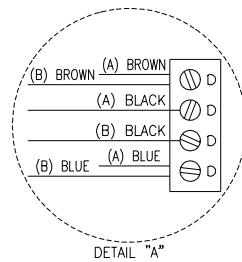
UNLESS HOOK RAISES WHEN "UP" BUTTON IS PRESSED SEVERE HOIST DAMAGE AND A DROPPED LOAD MAY RESULT. CORRECT IMPROPER HOOK DIRECTION BY INTERCHANGING MOTOR LEADS ORANGE (5) AND RED (8). DO NOT CHANGE PUSHBUTTON WIRING.

WARNING

THIS EQUIPMENT MUST BE EFFECTIVELY GROUNDED ACCORDING TO APPLICABLE CODES.

AVERTISSEMENT

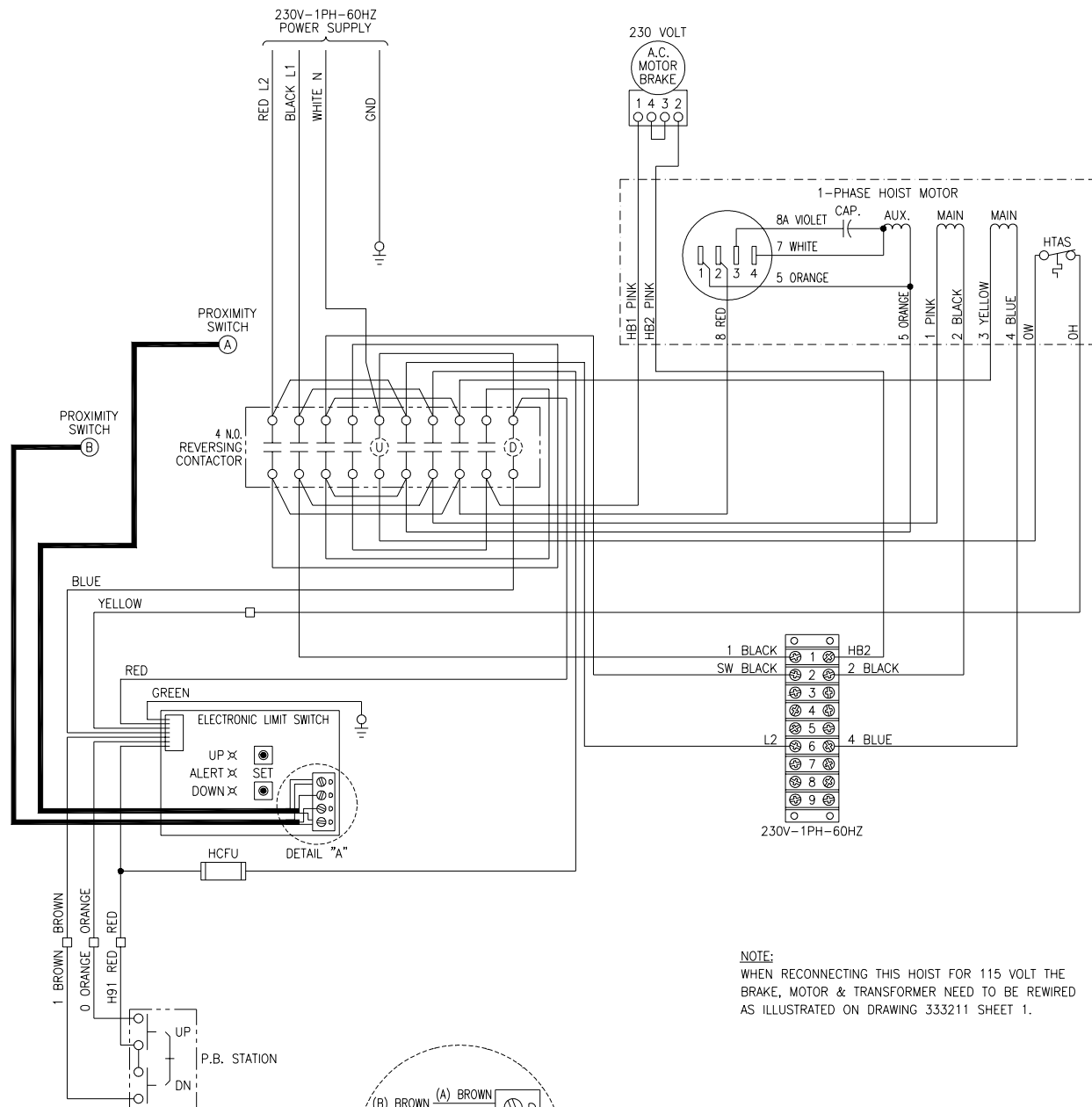
CET EQUIPMENT DOIT ETRE MIS A LA TERRE EN ACCORDANCE AVEC LES NORMES EN VIGUEUR.



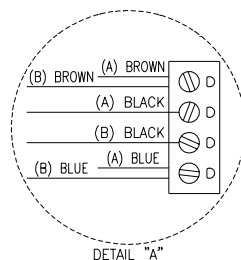
115V CONNECTIONS, 1 PHASE

333211-01

1 PHASE, 115/230 VOLT RECONNECTABLE, SINGLE SPEED HOIST



NOTE:
WHEN RECONNECTING THIS HOIST FOR 115 VOLT THE BRAKE, MOTOR & TRANSFORMER NEED TO BE REWIRED AS ILLUSTRATED ON DRAWING 333211 SHEET 1.



DANGER:
UNLESS HOOK RAISES WHEN "UP" BUTTON IS PRESSED SEVERE HOIST DAMAGE AND A DROPPED LOAD MAY RESULT.
CORRECT IMPROPER HOOK DIRECTION BY INTERCHANGING MOTOR LEADS ORANGE (5) AND RED (8).
DO NOT CHANGE PUSHBUTTON WIRING.

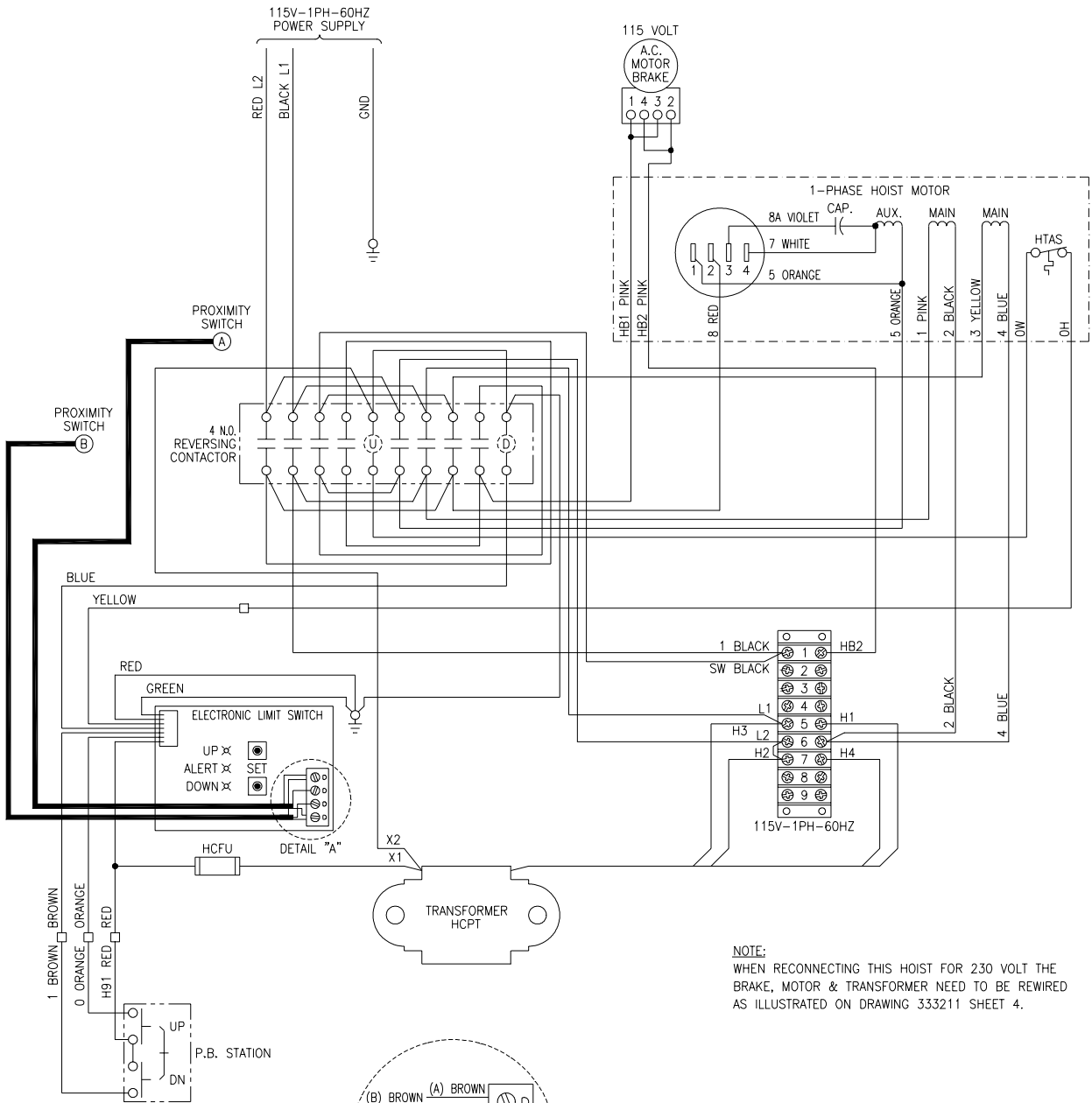
WARNING
THIS EQUIPMENT MUST BE EFFECTIVELY GROUNDED ACCORDING TO APPLICABLE CODES.

AVERTISSEMENT
CET EQUIPEMENT DOIT ETRE MIS A LA TERRE EN ACCORDANCE AVEC LES NORMES EN VIGUEUR.

230V CONNECTIONS, 1 PHASE

333211-02

1 PHASE, 115/230 VOLT RECONNECTABLE, SINGLE SPEED HOIST WITH TRANSFORMER

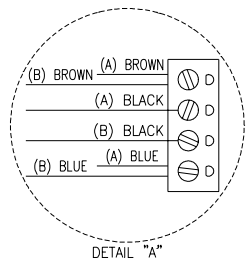


NOTE:
WHEN RECONNECTING THIS HOIST FOR 230 VOLT THE
BRAKE, MOTOR & TRANSFORMER NEED TO BE REWIRED
AS ILLUSTRATED ON DRAWING 333211 SHEET 4.

DANGER:
UNLESS HOOK RAISES WHEN "UP" BUTTON
IS PRESSED SEVERE HOIST DAMAGE AND A
DROPPED LOAD MAY RESULT.
CORRECT IMPROPER HOOK DIRECTION BY
INTERCHANGING MOTOR LEADS ORANGE (5)
AND RED (8).
DO NOT CHANGE PUSHBUTTON WIRING.

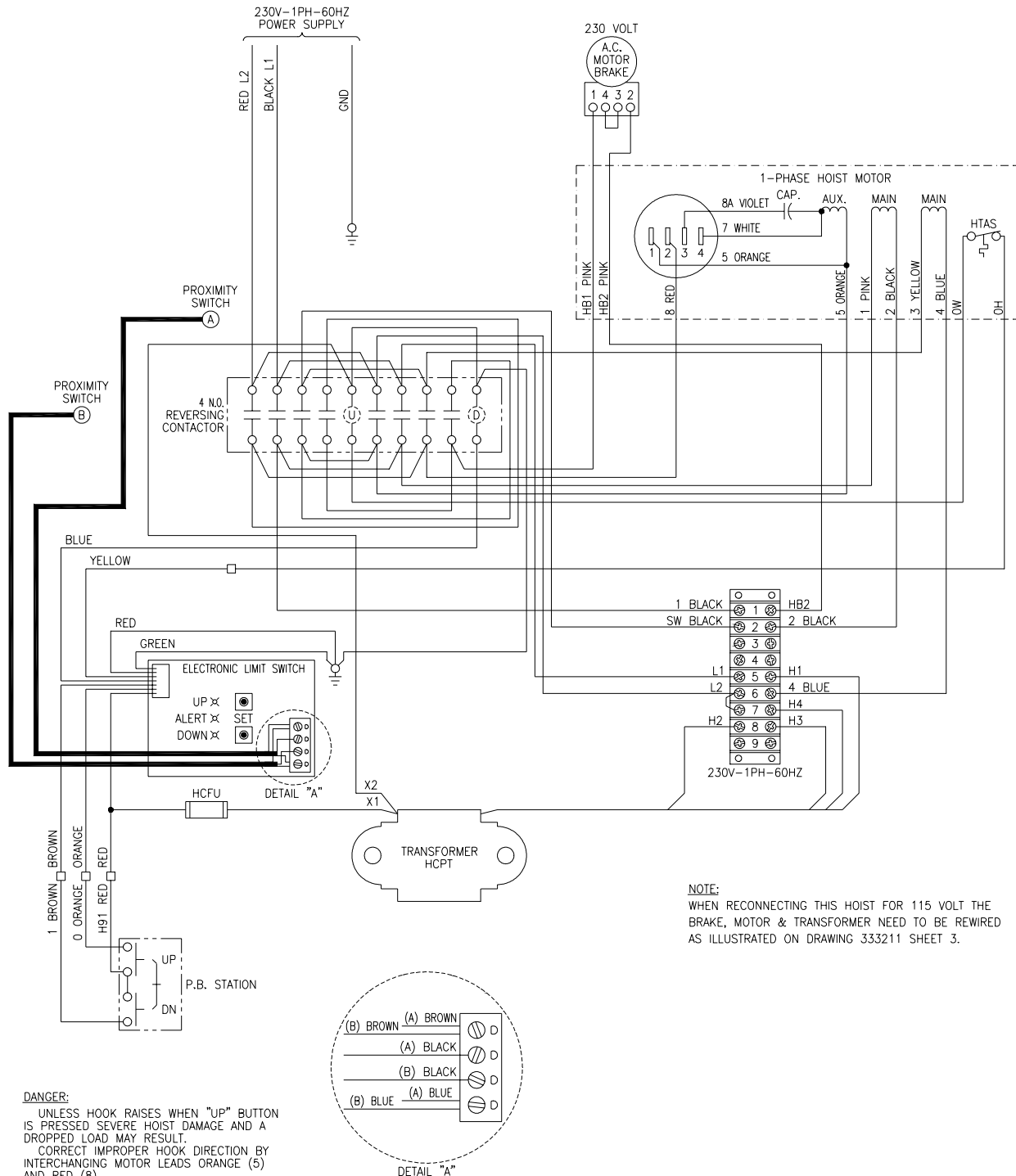
WARNING
THIS EQUIPMENT MUST BE EFFECTIVELY
GROUNDED ACCORDING TO APPLICABLE
CODES.

AVERTISSEMENT
CET EQUIPEMENT DOIT ETRE MIS A LA TERRE
EN ACCORDANCE AVEC LES NORMES EN
VIGUEUR.



115V CONNECTIONS, 1 PHASE

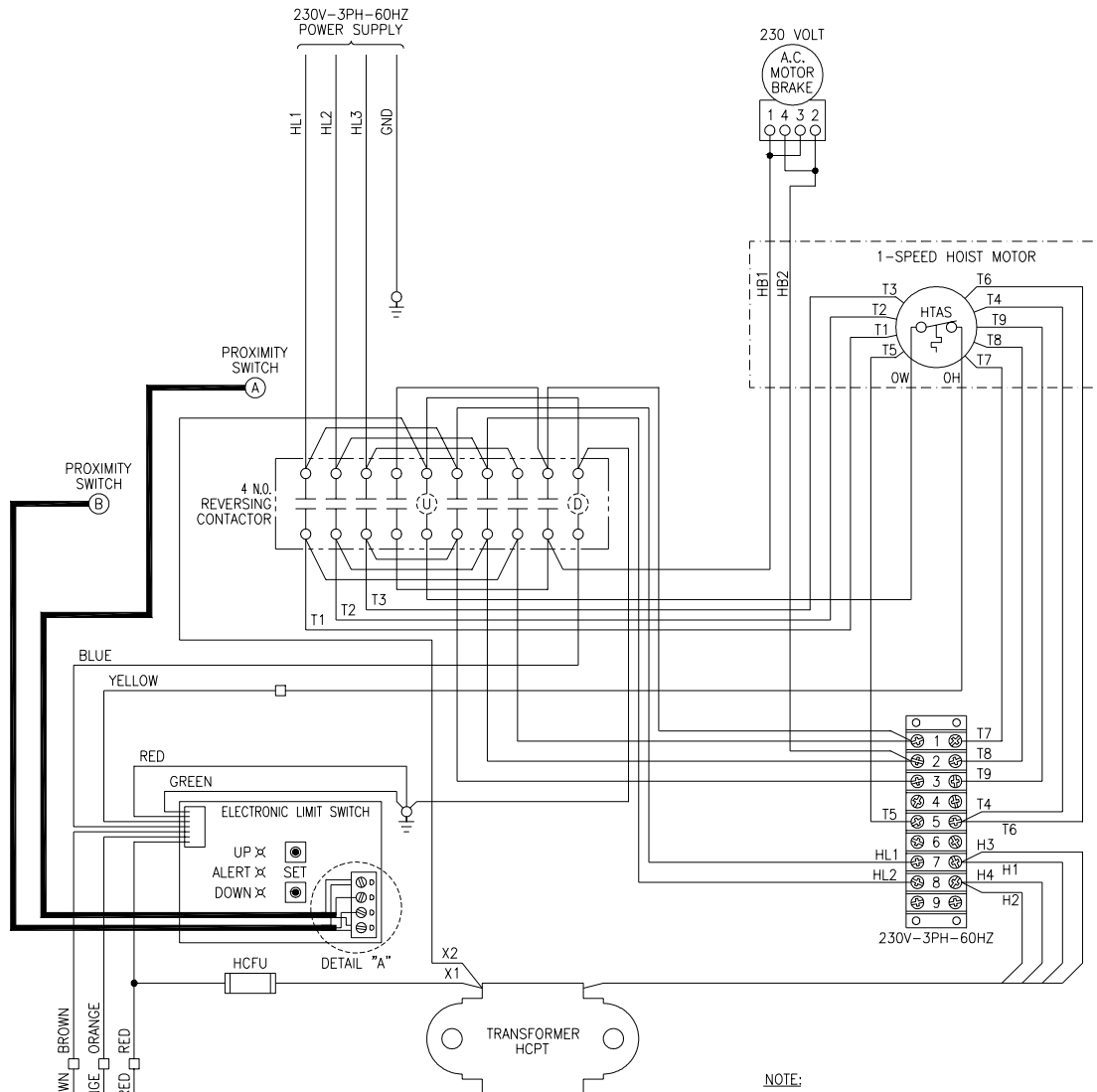
1 PHASE, 115/230 VOLT RECONNECTABLE, SINGLE SPEED HOIST WITH TRANSFORMER



230V CONNECTIONS, 1 PHASE

333211-04

3 PHASE, 230/460 VOLT RECONNECTABLE, SINGLE SPEED HOIST



NOTE:
WHEN RECONNECTING THIS HOIST FOR 460 VOLT THE
BRAKE, MOTOR & TRANSFORMER NEED TO BE REWIRED
AS ILLUSTRATED ON DRAWING 333213 SHEET 2.

DANGER:

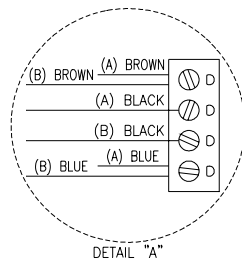
UNLESS HOOK RAISES WHEN "UP" BUTTON IS PRESSED SEVERE HOIST DAMAGE AND A DROPPED LOAD MAY RESULT.
CORRECT IMPROPER HOOK DIRECTION BY INTERCHANGING INPUT POWER L1 AND L3 DO NOT CHANGE PUSHBUTTON WIRING.

WARNING

THIS EQUIPMENT MUST BE EFFECTIVELY GROUNDED ACCORDING TO APPLICABLE CODES.

AVERTISSEMENT

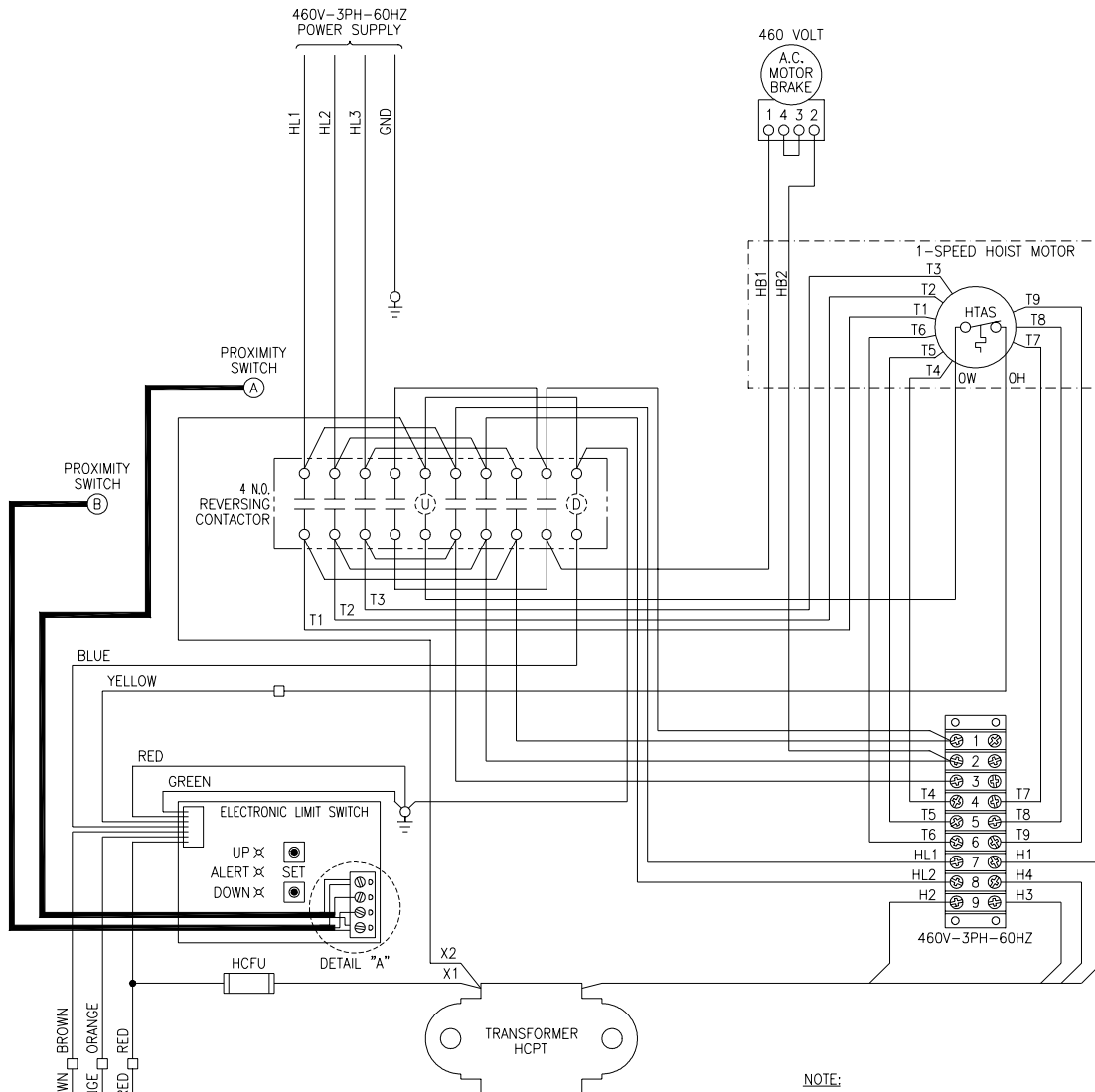
CET EQUIPEMENT DOIT ETRE MIS A'LA TERRE EN ACCORDANCE AVEC LES NORMES EN VIGUEUR.



230V CONNECTIONS, 3 PHASE

333213-01

3 PHASE, 230/460 VOLT RECONNECTABLE, SINGLE SPEED HOIST



NOTE:
WHEN RECONNECTING THIS HOIST FOR 230 VOLT THE BRAKE, MOTOR & TRANSFORMER NEED TO BE REWIRED AS ILLUSTRATED ON DRAWING 333211 SHEET 1.

DANGER:

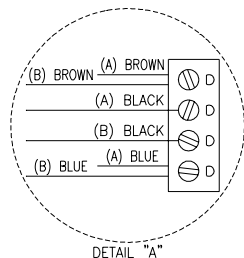
UNLESS HOOK RAISES WHEN "UP" BUTTON IS PRESSED SEVERE HOIST DAMAGE AND A DROPPED LOAD MAY RESULT.
CORRECT IMPROPER HOOK DIRECTION BY INTERCHANGING INPUT POWER L1 AND L3 DO NOT CHANGE PUSHBUTTON WIRING.

WARNING

THIS EQUIPMENT MUST BE EFFECTIVELY GROUNDED ACCORDING TO APPLICABLE CODES.

AVERTISSEMENT

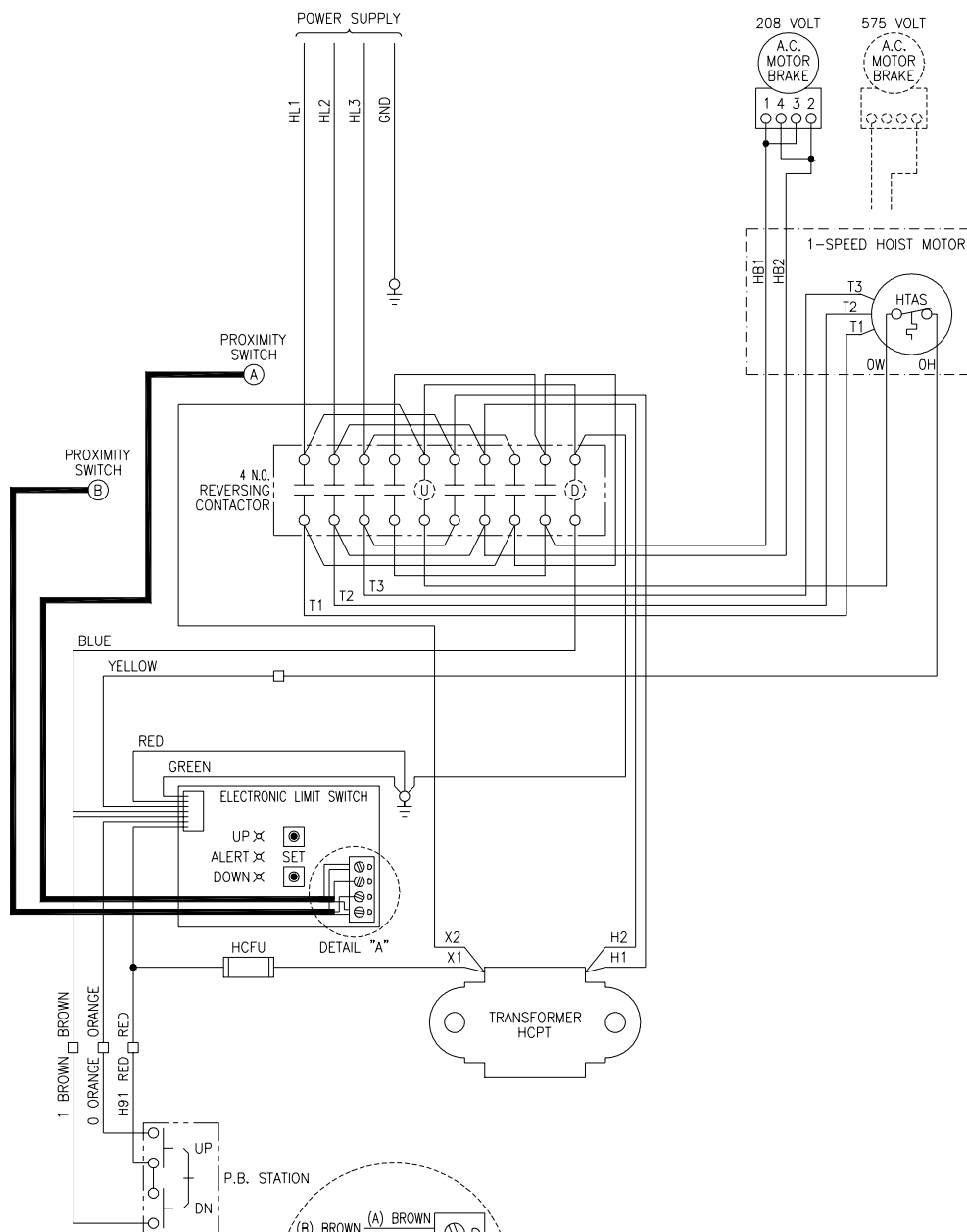
CET EQUIPEMENT DOIT ETRE MIS A'LA TERRE EN ACCORDANCE AVEC LES NORMES EN VIGUEUR.



460V CONNECTIONS

333213-02

3 PHASE, SINGLE VOLTAGE, SINGLE SPEED HOIST



DANGER:

UNLESS HOOK RAISES WHEN "UP" BUTTON IS PRESSED SEVERE HOIST DAMAGE AND A DROPPED LOAD MAY RESULT.

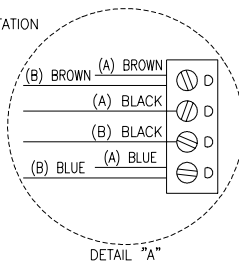
CORRECT IMPROPER HOOK DIRECTION BY INTERCHANGING INPUT POWER L1 AND L3 DO NOT CHANGE PUSHBUTTON WIRING.

WARNING

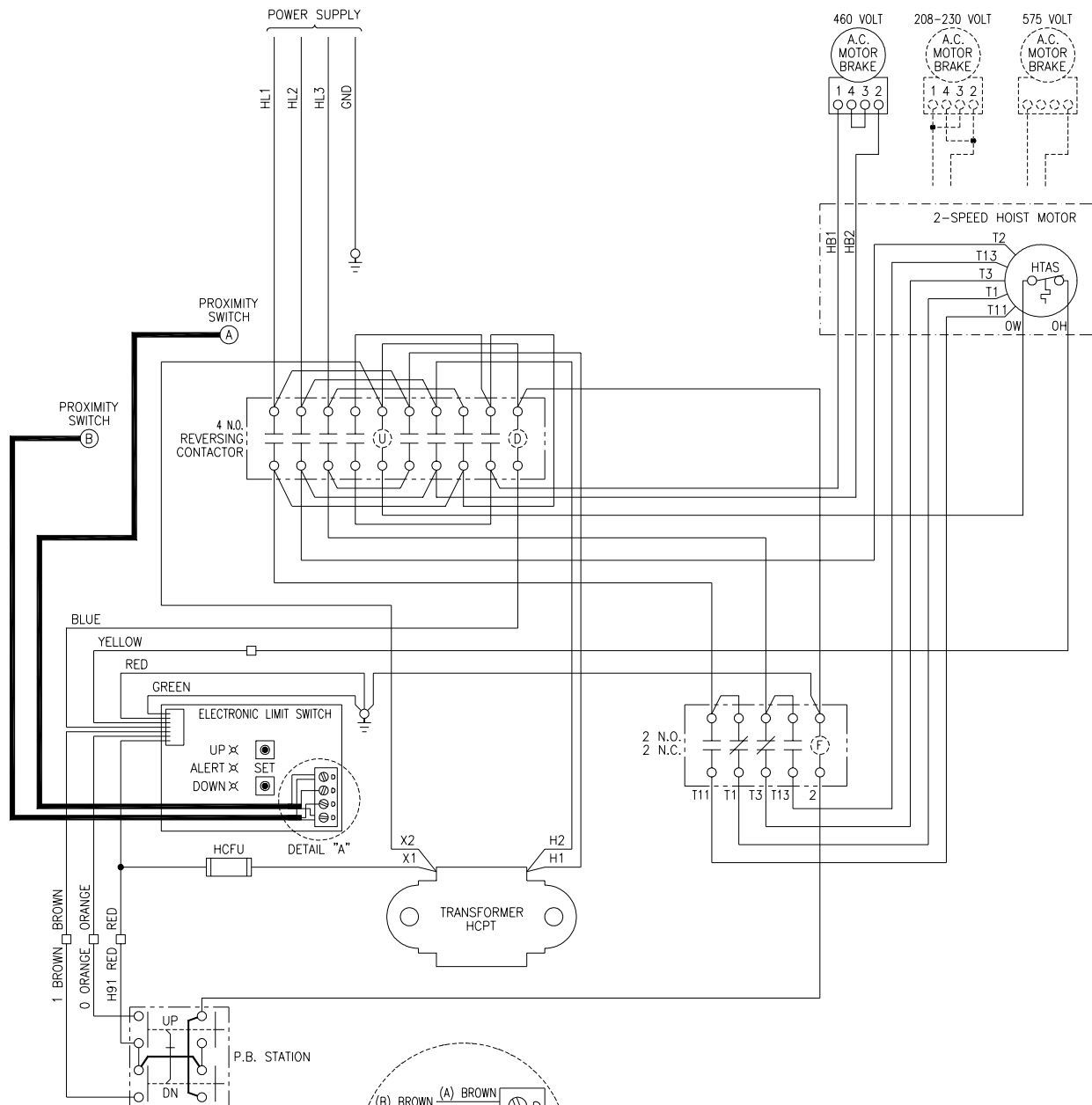
THIS EQUIPMENT MUST BE EFFECTIVELY GROUNDED ACCORDING TO APPLICABLE CODES.

AVERTISSEMENT

CET EQUIPEMENT DOIT ETRE MIS A'LA TERRE EN ACCORDANCE AVEC LES NORMES EN VIGUEUR.



3 PHASE, SINGLE VOLTAGE, TWO SPEED HOIST



DANGER:

UNLESS HOOK RAISES WHEN "UP" BUTTON IS PRESSED SEVERE HOIST DAMAGE AND A DROPPED LOAD MAY RESULT. CORRECT IMPROPER HOOK DIRECTION BY INTERCHANGING INPUT POWER L1 AND L3 DO NOT CHANGE PUSHBUTTON WIRING.

WARNING

THIS EQUIPMENT MUST BE EFFECTIVELY GROUNDED ACCORDING TO APPLICABLE CODES.

AVERTISSEMENT

CET EQUIPEMENT DOIT ETRE MIS A LA TERRE EN ACCORDANCE AVEC LES NORMES EN VIGUEUR.

